

TUCSON MUSEUM of ART CONTEMPORARY ART SOCIETY

2019-2020 Exhibition Support

In the fall of 2019, Chief Curator Julie Sasse requested support for what she described as the most meaningful exhibition of her career – an exhibition highlighting the works of some of the Elaine Horwitch Galleries' most popular artists. Drawn from the TMA collection and loans from Arizona and New Mexico, these paintings, sculptures, and works on paper reveal the breadth of art and innovation that occurred in the Southwest at a pivotal time of change. CAS happily and proudly agreed to be a sponsor.

SOUTHWEST RISING: CONTEMPORARY ART AND THE LEGACY OF ELAINE HORWITCH

FEBRUARY 29, 2020 – SEPTEMBER 20, 2020



Joe Baker, *Camp Horwitch*, 1985

oil on canvas, 66 x 106 in.

Private Collection

Photo credit: James Hart Photography, Santa Fe, NM



James Havard, *Brahma Spread*, 1980
 acrylic on canvas, 60 x 72 in.
 Private Collection
 Courtesy of the Artist



Howard Post, *The Bull Pen*, 1978
 oil on canvas, 42 x 60 in.
 Collection of the Tucson Museum of Art
 Gift of Lynn Taber. 2000.58.1



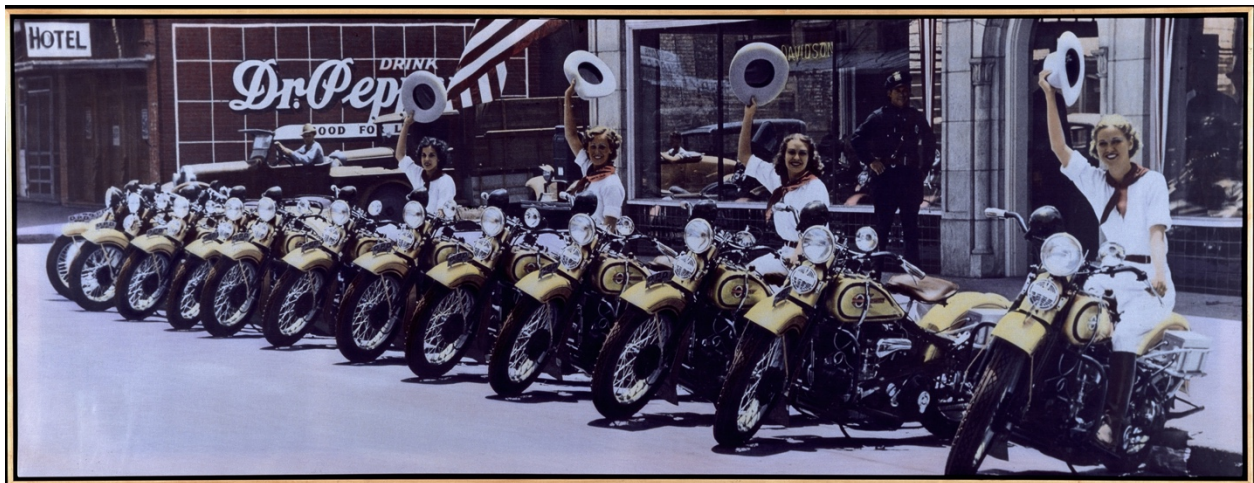
Anne Coe, *Getting Supplies*
 acrylic on canvas, 35 x 45 in.
 Private Collection
 Courtesy of the Artist



David Bradley, *The Tradition Lives On*, 2007
 acrylic on canvas, 36 x 72.5 in.
 Heard Museum Collection, Gift of Alice J. Fleet Dickey
 Courtesy of the Artist



Douglas Kent Hall, *Mesquite Texas*, 1973
 silver gelatin print, 26 x 32 in.
 © Douglas Kent Hall Estate



Bob Wade, *Cowgirls & Harleys*, 2016
 acrylic on digital canvas, 17 x 48 in.
 Collection of the Tucson Museum of Art. Gift of Dede Rogers. 2017.2
 © Bob Wade



Mark McDowell, *Blue Chair with Empty Ashtray*, 1985
acrylic on canvas, 60 x 51 in.
Private Collection



Dick Jemison, *Detritus Series IV*, 2007
mixed media on canvas, 60 x 40 in.
Collection of the Tucson Museum of Art. Gift of the Artist.

On February 29, the exhibit opened with a members' reception, followed by the panel "The Bad Boys of Elaine Horwitch Galleries" the next day and "The Presence of Women at Elaine Horwitch Galleries" the following week. More than twenty artists from Arizona and New Mexico and more than 25 members of the Horwitch family attended the opening festivities. The exhibition and the museum closed to the public on March 17 due to the COVID-19 outbreak.



Dr. Julie Sasse with members of the Horwitch family, 2020

In the fall of 2019, Sasse completed the final editing of her book, *Southwest Rising: Contemporary Art and the Legacy of Elaine Horwitch* for release at the opening of the exhibition. Using its Catalog Funds, CAS contributed to its publication. The book is available for purchase online from the [Museum Store](#).

